

www.elledecor.in

ELLE DECOR

SUBSCRIBER'S COPY

Exclusives
SANJAY &
INA ARORA
YABU
PUSHELBERG
JAIME
HAYON

JUNE - JULY 2016, ₹150

Reporting from...

SALONE DEL MOBILE, MILAN
SINGAPLURAL, SINGAPORE

m

t

w

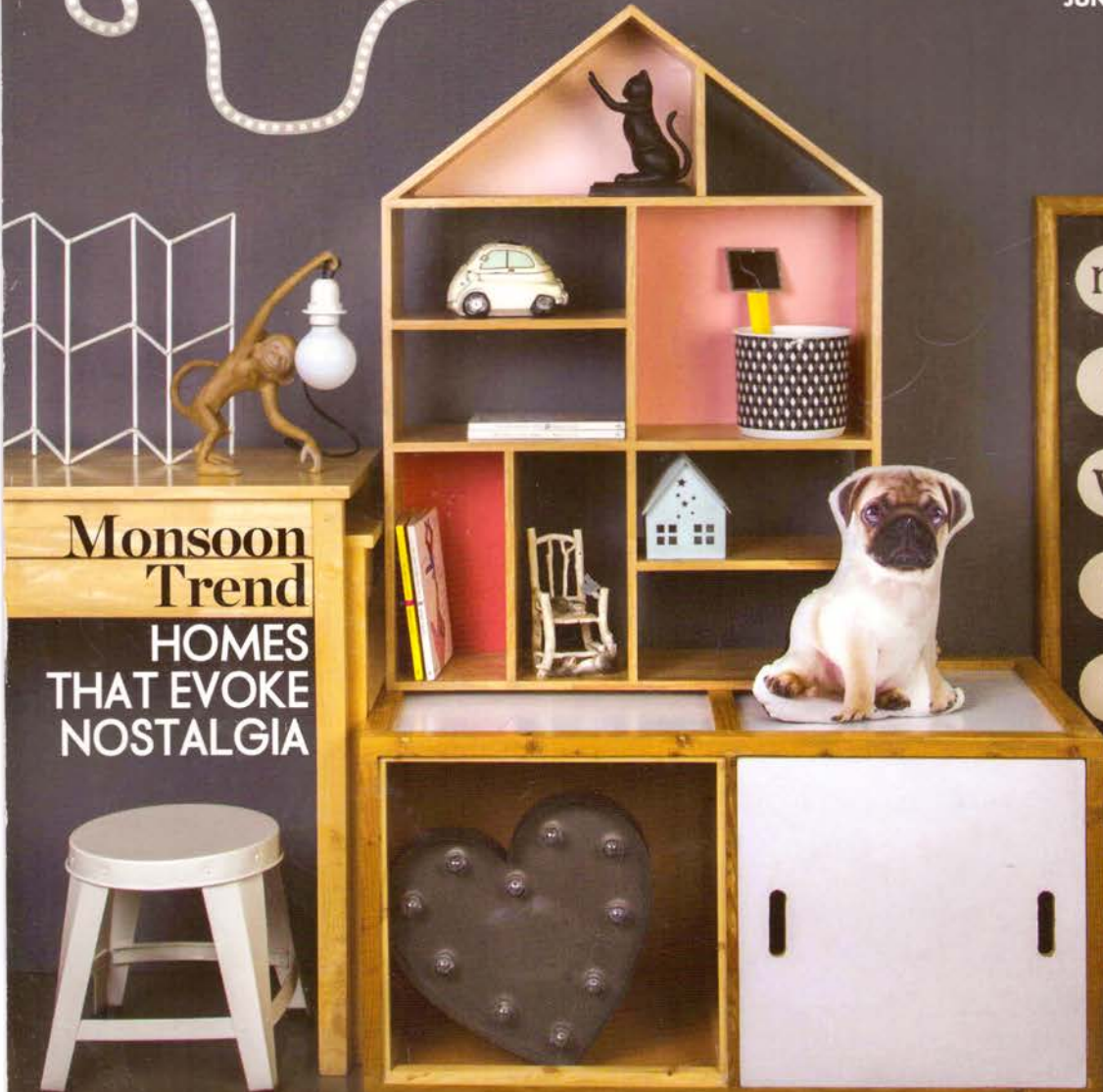
t

f

s

s

15
YEARS



Monsoon Trend
HOMES THAT EVOKE NOSTALGIA

FOREVER YOUNG

CREATIVE DECOR IDEAS: INORGANIC KINGDOM, COY PINK & TENDER BLUE PLUS, IMAGINATIVE ROOMS & FURNITURE FOR KIDS OF ALL AGES

DECOR INSPIRATION

“OUR INITIAL THOUGHT WAS TO USE GLASS AS A REPLACEMENT MATERIAL, IN A PRODUCT INSPIRED BY THE MAHARAJA ERA” - PRATEEK JAIN



From Above Left Gautam Seth and Prateek Jain of Klove Studio; Tusk Light hones influences from India's rich cultural past, yet its aesthetic is “abstract and minimal” says Ashiesh; Its hanging ornament is reminiscent of the Rajasthani tradition of dressing the tusks of elephants

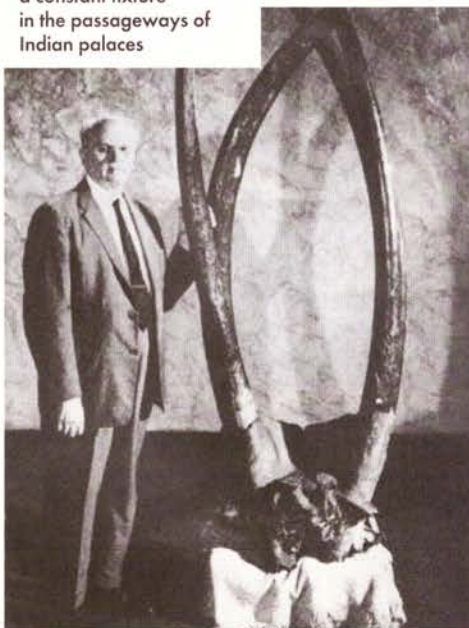
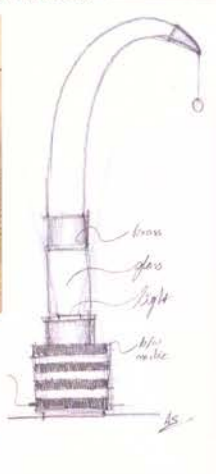


FINAL PRODUCT

INSPIRATION



Clockwise, from Above Ashiesh Shah; One of the first drafts of the design; The Tusk Light was primarily inspired by ivory showpieces that were a constant fixture in the passageways of Indian palaces



TUSK LIGHT

An exclusive peek into the stimulus behind creations of India's renowned design talent. Here, the multifaceted Ashiesh Shah details through the conscious process of imagining this table fixture inspired by ivory trophies of yore, with a little help from Klove Studio

TEXT BY **ASHIESH SHAH**
PHOTOGRAPHS COURTESY **ASHIESH SHAH, KLOVE STUDIO**

LONG TIME COMING

Gautam Seth and Prateek Jain (Klove Studio) and I have been on several research trips together. Now friends, we often talked about doing a collaboration. Few months ago, I was designing for a project and sketched out this piece. When it came to manufacturing, they were the perfect choice.

THE IDEOLOGY

Ivory trophies once adorned the hallways of palaces across India. With authorities recently re-enforcing the ban on ivory (a much needed move), these showpieces have disappeared. For the light, the relationship between material and form and this collectible came to mind. The piece in glass represents the intangibility of the material and yet implies the form of the tusk. Subtle details like the black and white marble base, reference patterns in these royal spaces, as well as allude to “ebony and ivory”.

MAMMOTH TASK

It was quite challenging to design something so traditional and give it a contemporary feel. We looked at many ivory trophies made in that period; we focused on other elements, from the architecture and design to the sensibility of the time. My trips across Rajasthan and to the Mysore Palace had a part to play too. Klove Studio contributed to all the technical aspects and manufacturing of the piece. They work with lighting and glass on a daily basis and understand the material as well its limitations, which is why they were able to push the design, beyond the obvious. ♦